

### Class Dojo Account

In September, as a means of furthering communication between you and the school, we will set up a Dojo account for each class. You will receive details of how to join your class in due course.

### Contact Information

St. Bride's Primary School,  
Derryvolgie Avenue,  
Belfast BT9 6FP

Telephone: 028 90381700,

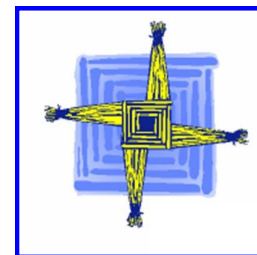
E-mail: [info@stbrides.belfast.ni.sch.uk](mailto:info@stbrides.belfast.ni.sch.uk)

Twitter @St.BridesPS1

Interviews with the class teacher or Principal  
may be arranged through the office.



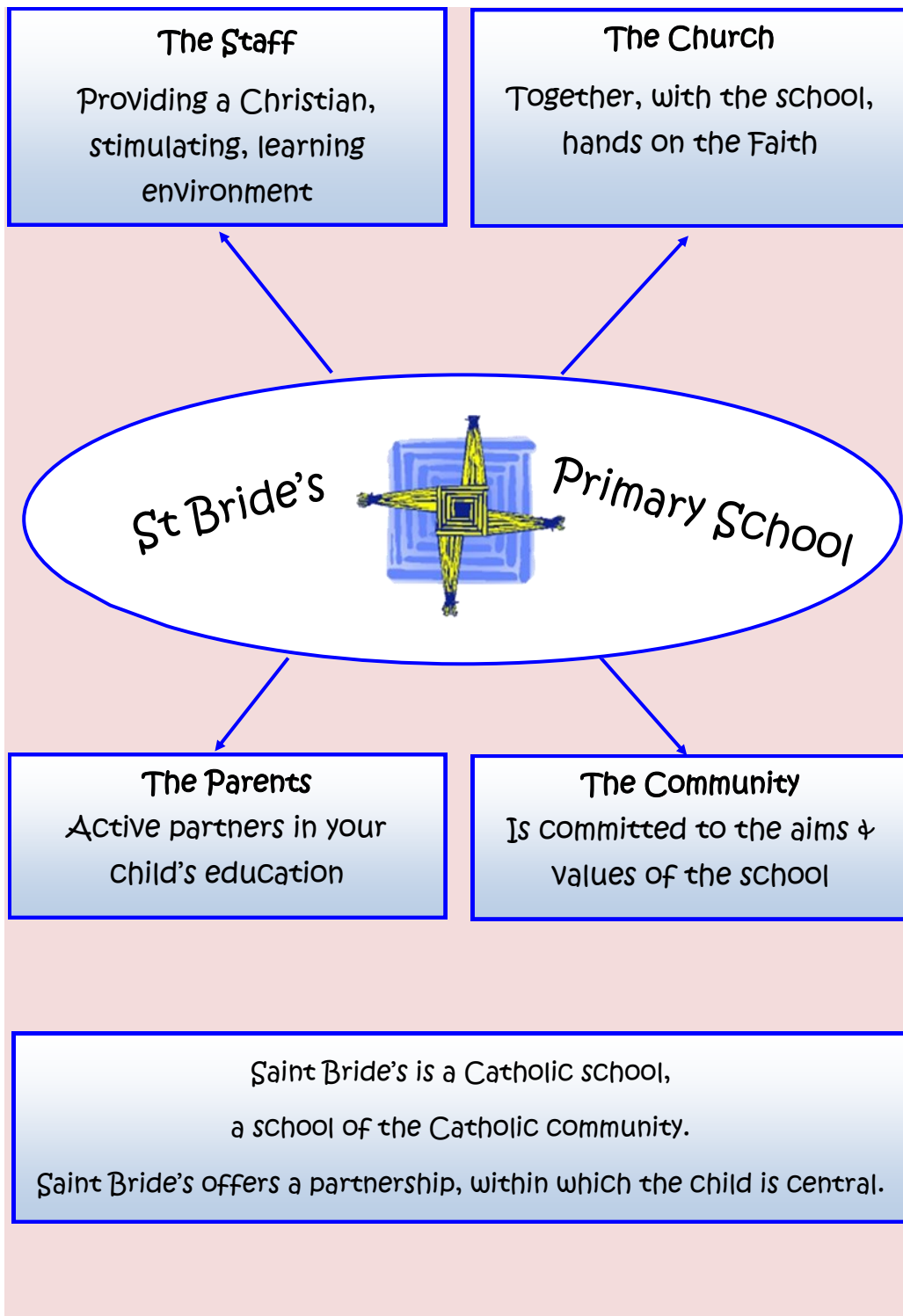
Website: [www.stbridesprimaryschool.org](http://www.stbridesprimaryschool.org)



Welcome to  
**St. Bride's Primary School**

"Attainment for all within a happy, safe,  
caring Catholic environment"





## Settling In Routine

Your child \_\_\_\_\_

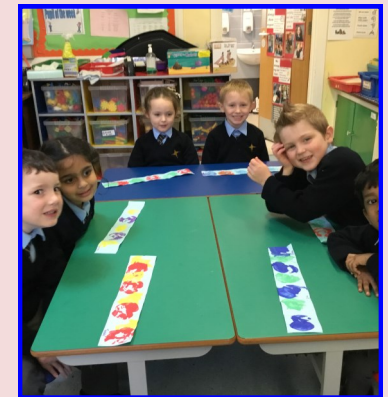
Class \_\_\_\_\_

Group                      A   B   C

Will start school on \_\_\_\_\_

Time \_\_\_\_\_

Children in all groups will need a healthy snack each day. Children who start at 12 noon need to have their lunch before they come to school. Thursday the 15th of September will be the first full day at school for all Year 1 pupils. They will take their lunch/dinner at school. The school day will end at 2pm from this day.



## Procedures for Starting Year 1 in St. Bride's Ps.

| Time             | Week 1 1st– 7th Sept | Week 2 8th– 14th Sept |
|------------------|----------------------|-----------------------|
| 9.00 am-11.00 am | Group A              | Group C               |
| 12 noon– 2.00pm  | Group B              | Group A & B           |

Each class is split into three groups A, B or C. Group C will be children who have attended St. Bride's Nursery School as they are familiar with the school, usually more settled and more information is known about these children.

## Thursday the 15th of September will be the first FULL DAY for all children.

All children over a two week period are in class for at least 10 hours with an adult to child ratio of approximately 1:6. The children who have not attended St. Bride's Nursery will be in for 20 hours over the two week period.

St. Bride's Nursery children will have:

- Been observed by their Year 1 Teacher in the Nursery environment and their new Classroom
- Interacted with their Year 1 teacher in the Nursery environment and their new Classroom
- Be familiar with the school layout, played in the Year 1 yard and eaten in the dinner hall.
- Visited their new Classroom on a number of occasions and are familiar with the staff, the classrooms, cloakrooms and toilet area.



## Dear Parents

We hope your child will be happy starting St. Bride's. This booklet will provide you with information about school routines and some ways in which you can help your child prepare for this exciting time.

- There will be a phased intake of children during the first two weeks of Term One. Your child's Class, Group, (A, B or C), Date, and Start Time can be found at the back of this booklet.
- School lunch/dinners will not be available during this time.
- At the end of the school day the class teacher will accompany your child to the adjoining playgrounds to meet you.
- Your child will always stay with the class teacher until they see who is collecting them.
- Please ensure your child is punctual for school and is collected on time.
- If your child is absent please inform us via the School Gateway App stating the reason for the absence.
- Please inform the class teacher if there is a problem which may affect your child's progress e.g. illness, hearing, language difficulties, sight problems, allergies, dietary requirements, family circumstances, moving house etc.

### In preparation for school :

- Talk to your child about going to school to prepare him or her for what is ahead
- Make school an appealing place
- Talk about friends , siblings who may be at school
- Help and encourage your child to be as independent as possible with regards to dressing, toileting , using a tissue , washing and drying their hands and managing their things.
- Use the photos in the booklet to familiarise them with their teacher.
- Help them recognise their name.
- Help them put on, take off and hang up their coat.
- Show them how to open their lunch-box, drinks bottle etc.
- Practise putting on and off shoes.





### Staff

|                  |               |
|------------------|---------------|
| Principal        | Mrs Quinn     |
| Vice Principal   | Miss Joyce    |
| Vice Principal   | Mrs Granleese |
| Head of FS & KS1 | Mrs O' Prey   |



### School Time Table

|             |                 |
|-------------|-----------------|
| Years 1 – 3 | 9.00am – 2.00pm |
| Years 4 – 7 | 9.00am – 3.00pm |

### Early Morning Drop-off

Parents can drop their children off in the Derryvolgie school hall from 8.30am– 8.40am. Year One children can use this facility when well-settled.

### Early Learners Day Care For St. Bride's

Breakfast Club 7.30-9.00am. Wrap Around Club 2-4pm each day. After School Club from 2–6pm each day. If you wish to avail of this please contact Miss Debbie at Early Learners Day Nursery on 028 90682632 or by email: [info@earlylearnersdaynursery.com](mailto:info@earlylearnersdaynursery.com)

### Doors open at 9.00am

Please bring your child to and from school through the protected gates provided and not through the staff car parks. Parking is permitted in the church car parks on both Derryvolgie Avenue and Windsor Avenue.



The [Statutory Curriculum](#) in the [Foundation Stage](#) is set out under the following areas of learning:

- *Language and Literacy*
- *Mathematics and Numeracy*
- *The Arts*
- *The World Around Us*
- *Personal Development & Mutual Understanding*
- *Physical Development & Movement*
- *Religious Education*

There will be opportunities to learn more about each of these areas at the [Year One Curriculum Night](#) for parents in Term One.

## The Revised Curriculum

The Foundation Stage within the Revised Primary Curriculum for Northern Ireland has been created to enable teachers to provide a learning programme which best meets the developmental needs of the children in the first two years of statutory education. It seeks to build on diverse learning experiences at home and in pre-school settings.

The aims of the Foundation Stage are to :

- *Promote children's personal development*
- *Promote positive attitudes and dispositions to learning*
- *Promote children's Thinking Skills and Personal Capabilities*
- *Encourage Creativity and imagination*
- *Enable children to develop physical confidence and competence*
- *Develop children's curiosity and interest in the world around them*
- *Enable children to communicate in a variety of ways*
- *Motivate children to develop literacy and numeracy skills in meaningful contexts*



## Break and Lunch Time

There is a ten minute snack break each morning. As the school is a 'health promoting school' you are asked to provide a healthy break for your child i.e. one piece of fruit or a plain biscuit and water. This is followed by ten minutes of play time in the Year One yard.

At lunch time, children taking packed lunches will be supervised in their classrooms. All lunchboxes, water bottles and small containers should be clearly labelled with your child's name.

Children taking school dinners go to the dining hall. The dinner menu can be downloaded from our school website ([www.stbridesps.org.uk](http://www.stbridesps.org.uk)). The canteen caters for all dietary requirements.

School dinners currently cost £2.60 per day or £13.00 per week. All payments to school including school meals are made via the School Gateway App referred to in the letter of offer. If you have any queries please contact Mrs Christina Holland in the school office.

Some children may be eligible for Free School Meals and Uniform Allowance. Application forms for these are available from the [www.eani.org.uk/financial-help/free-school-meals](http://www.eani.org.uk/financial-help/free-school-meals)



Please note that due to increasing numbers of children suffering from allergies, St Bride's is a 'nut and sesame seed free' zone and children should not bring food containing nuts for Break or Lunch.





## Safeguarding Team

### St. Bride's Primary School Safeguarding Team

Chairperson of the Board of Governors: Ms Patricia Crossin  
 Link Governor for Safeguarding: Mrs Caroline Agnew  
 The School Principal: Mrs Quinn  
 Designated Teacher (DT): Miss Joyce  
 Deputy Designated Teacher: Mrs Granleese  
 Designated Teacher Nursery: Ms Ward  
 ICT Coordinators: Miss Meehan



Miss Joyce

Designated Teacher



Mrs Granleese

Deputy Designated  
Teacher



## Settling In Visual Time - Table



Play Time



Play Plenary



Break



Toilet



Playground



Welcome Time



Story Time



Literacy



Home Time

## Our School Uniform

### Girls

Grey pinafore/skirt  
Blue blouse  
Navy V-neck pullover/Cardigan  
Navy and gold tie  
Navy or grey tights  
White socks  
Black leather shoes  
Black gym shoes/trainers  
Year 1 **do not** need a white tee-shirt and shorts for PE

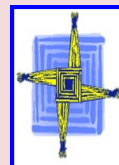


### Boys

Grey trousers  
Blue shirt  
Navy V-neck pullover  
Navy and gold tie  
Black leather shoes  
Black gym shoes/trainers  
Year 1 **do not** need a white tee-shirt and shorts for PE



Ties for St. Bride's P.S and jumpers with the school crest can be purchased from Warnocks on the Lisburn Road. Please make sure that you clearly label each item of uniform especially jumpers and coats. School bags are provided by the class teacher in September. Water bottles and lunch boxes should also be clearly labelled with the child's name.



## How a Parent Can Raise a Concern in Relation to Child Protection

I have a concern about my child or another child's safety



I can talk to the **CLASS TEACHER**



If I am still concerned I can talk to the  
Designated Teacher for Child Protection, **Miss Joyce** or  
Deputy Designated Teacher, **Mrs Granleese** or the Nursery Designated Teacher **Ms Ward**



If I am still concerned, I can talk to the **Principal**



If I am still concerned, I can talk/write to the  
**Chair of the Board of Governors**



At any time, I can talk to the Social Workers at the local **Health and Social Services Trust:**  
**(Gateway)**

Tel: 028 90 507000 (out of hours 028 95049999)

or

**The Central Referral Unit ( PSNI)**

Tel: 028 90 259299 or 101 Extension 30299

Parents may obtain a copy of the school's full **Child Protection Policy**  
from the school office on request.



## Meet the Year One Staff

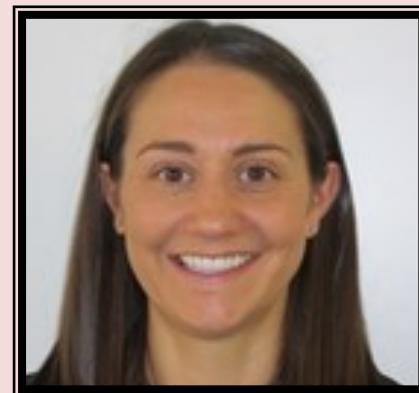


Mrs Shankelton



Mrs Toal

## Meet the Year One Staff



Mrs Merron



Miss Wynne