



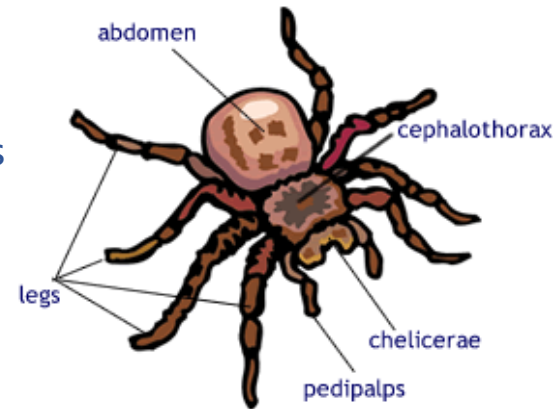
Spiders

By Cara Mcrory



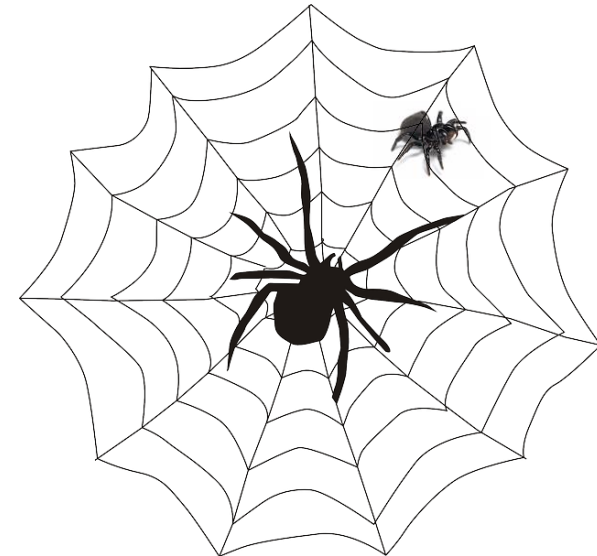
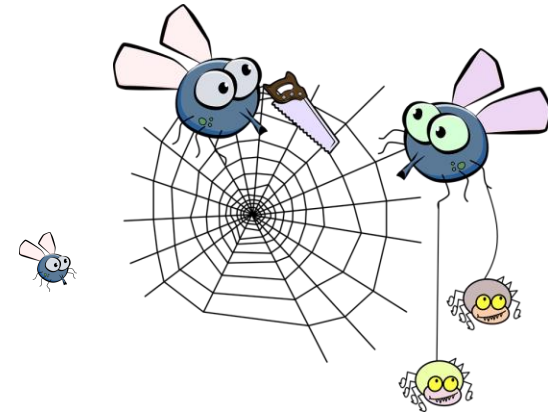
Classification

- Spiders are not insects, they are from a group of animals called arachnids and only have two body parts.
- Spiders have eight legs, no antennae and fangs.
- Spiders are not able to chew.
- Most spiders have eight eyes but some have less
- Spiders spin webs to catch bugs to eat.
- Spiders legs are covered in fur. They have 48 knees!



Facts

- A spiders web is made from silk which is a lot stronger than it looks.
- There are around 40,000 species of spiders.
- There are 650 different species of spiders in the UK.
- Spiders are not able to chew.
- Not all spiders spin webs.
- Spiders can go weeks without eating food.



Did you know?

There has never been a death from a spider death in the UK.

It takes a spider about an hour to build a web, and they usually build a new one every day.

The largest spider is a tarantula.

Even though spiders have eight eyes, most of them can't see very well – they rely on what they feel.

Words to know....

- **Abdomen**– the back part of a spider's body, where the spinneret glands are
- **Arachnid**– the class that spiders are in (not all spiders are arachnids)
- **Cephalothorax**–the front part of a spider's body, where their head and eyes are
- **Exoskeleton**–a skeleton that is outside a body instead of inside (which is called an endoskeleton)
- **Sac** – the round ball that spider mums make to hold their eggs in
- **Spinnerets** – the glands that produce silk for spinning webs, catching prey and protecting eggs

