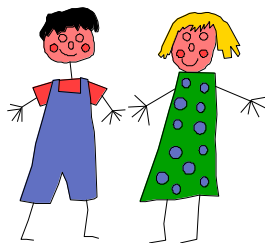


ST BRIDE'S PRIMARY SCHOOL
Tel 90381700 www.stbridesps.org.uk
SEPTEMBER 14 NEWSHEET

There will be a Mass for Yr 4 – Yr 7 children to celebrate the beginning of
the new academic year
on
Wednesday 17 SEPTEMBER at 11a.m.
in St Brigid's Church.
All parents are welcome

We would like to welcome all our pupils back to school, especially our new Primary 1 and Nursery children. We wish everyone a happy and successful year.

Please notify the office of any address, telephone numbers or contact changes.



PARENTS' MEETINGS

There will be a series of parent evenings when you will have an opportunity to receive an outline of the curriculum being covered by your child during the year.

Yr 7	Wednesday 10 September at 7.30 pm
Yrs 1 & 2 (& Miss Rogers P4)	Tuesday 16 September at 7.30 pm
Yrs 3 & 4	Wednesday 17 September at 7.30 pm
Yrs 5 & 6	Thursday 18 September at 7.30 pm

These meetings will take place at 7.30 pm in your child's classroom and should last 30-40 minutes. Letters will be sent through your child's teacher. We hope you will be able to attend.

BELB dinner ticket prices

Meals Tickets are £2.40 each / £12.00 per week

Parents are asked -

- to purchase meals tickets on **Mondays only**
- to send in the correct amount of money to the teacher for the week, i.e. £12.00 in an envelope with your child's name clearly marked on the outside

Parents wishing to purchase meals tickets for month or term may do so through the office. If your child has any special dietary requirements or food allergies please contact the school.

Cheques **MUST** be made payable to **"BELB"** and **not "St Bride's"**

REMINDER

NO NUTS here!!! As we have a number of children with nut allergies we would ask that no foods containing nut products be sent into the school. This should also **include** sesame seed products (e.g. sesame snaps, seeded bread or crackers, and hummus).

We also ask that parents do not send in cakes for the class to share on birthdays as some of these also contain nuts or nut traces.

In the interest of health and safety all children should bring their lunches to school in lunch boxes rather than plastic bags.

After school activities

MONDAY

- **Judo Classes** for Yr 5 / 6/ 7 from 3.15-4.15pm Start date TBC
- **French classes** from 2 – 3 p.m.(Yr 3) and 3 – 4.10 p.m. (Yr 5) Start date TBC
- **Boys soccer team** training 3-4pm. Start date to be announced
- **Girls' Gaelic football** training for P6/7 girls in the Ashleigh Playground from 3-4pm Start date to be announced (Weather Permitting!)

TUESDAY

- **Orchestra** rehearsals from 3.15 - 4 15 pm. starting on 16 September. Children can be collected at 4.15 pm from the Derryvolgie site.
- **ICT Code Club**, Year 5, Tuesdays 3.00 - 4.00pm. Venue: Computer Suite, Ashleigh Building. Start date to be announced
- **French classes** from 2 – 3p.m (Yr 3) and 3 – 4.10p.m. (Yr 4) Start date TBC

WEDNESDAY

- **Judo Classes** for Yr 4/5 (new class) in the Derryvolgie Assembly Hall, from 3.15 - 4.15
- **French classes** from 3 – 4.10 p.m. (Yr 6) Start date TBC

THURSDAY

- **Boys Gaelic Football Training** is at Harlequins 3.30 to 4.30 Start date TBC
- **Girls Netball** Yr 6 & Yr 7 in the school from 3.15 – 4.15pm. beginning on 11 Sept

Parents are asked to collect children **promptly** following after-school activities. **Any children remaining after this time will be sent to the main entrance foyer of the school on the Derryvolgie site and should be collected from there.**

Pupil Safety- Reminders

- If any pupil needs to leave the school during the normal school day, for medical or other reasons, parents are asked to send a note to the class teacher and have the child collected from the classroom by a responsible adult. No child may leave school without these procedures being followed.
- For safety reasons, girls are to wear stud earrings only. Boys are not allowed to wear earrings. **Girls with long hair must have it tied back and boys must have their hair no longer than collar length**
- In the interests of the children's safety, parents are reminded **not** to park on the footpaths on Windsor Ave and Derryvolgie Ave, to leave the entrances to the school clear and to observe the "No Parking" yellow lines. **These are now legally enforceable and tickets will be issued by police and wardens.** The times of the restricted parking are on display on the road signs.
- Children should enter the premises through the pedestrian gates and **not the staff car parks** and use the Patrolman at all times. Parents are asked not to use the car park on the Ashleigh site when collecting children at 3 p.m. We would ask all parents to take great care in the mornings, at 2 pm and at 3 pm to avoid any accidents. Parents are asked **not** to use the staff car parks for parking or access.

For those children who wish to cycle to school, we have a few safety reminders.

- The children should always wear a helmet
- They should always wear a high visibility vest
- School bags need to be worn correctly so that buckles etc. do not get caught up in the mechanisms. Nothing should be carried on the handlebars – both hands need to be on the bars.
- The bike should be **locked** while in the shelter.
- The children must wheel the bike in the playground.
- The bike should be brought home every day.

Parents need to be confident that their child has a full understanding of the safe way to ride their bike to school before allowing them to do so.